



# Meet your HCRG Care Group

## 0-19 LHYPFS School Nursing Team (North)

### Universal Reach Team

This team will deliver a universal service to all children and young people with a focus on public health interventions and assessment of health needs. This will include a named link school nurse to each school/college, delivery of the School Health Needs Assessment process and the National Child Measurement Programme in line with the Healthy Child Programme. There will continue to be a Duty practitioner available each weekday to provide support and advice to families and professionals. Requests for support referrals will be triaged by the team and actioned accordingly with individual packages of care provided.

### Specialist Services Team

This team will be responsible for providing support to the most vulnerable children and young people including those with complex and additional needs and those in need of protection. Although not directly linked to individual schools the practitioners will work closely with staff in the relevant schools/colleges for which these children and young people attend. The team will attend identified Child Protection, Child in Need meetings, undertaking individual health assessments and providing identified packages of care.

### Meet your School Nurses



Elizabeth Atkinson



Claire Dillon



Helen Shaw



Andrea Goodey



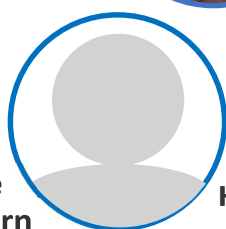
Tracy Dixon



Wendie Rosling



Chantelle Weatherburn



Vicky Holmes



Gemma Walling



Ellie Richardson



Team Leader  
Lee Dawson

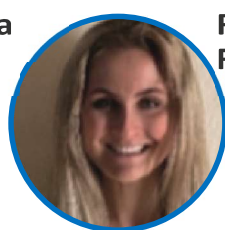


Team Leader  
Victoria Curran

### Meet your Staff Nurses



Brenda Jones



Rosie Fletcher



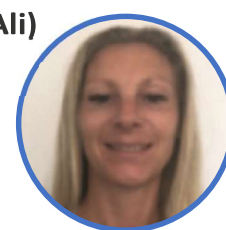
Kelly Morgan



Louise Mapp



Alison (Ali) McCabe



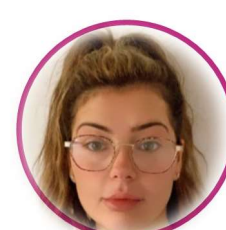
Rachel Proctor



Gemma Challenger

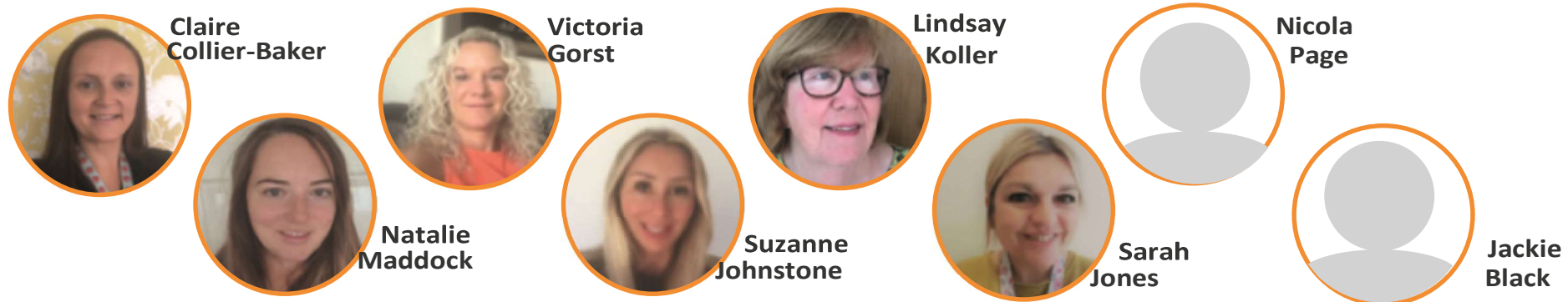


Shannon Schofield



Bethany Lamb

## Meet your Healthy Family Support Worker (HFSW)



You can contact the School Nursing Team on **0300 247 0040** or by sending a Request for Support form to **[vcl.019.singlepointofaccess2@nhs.net](mailto:vcl.019.singlepointofaccess2@nhs.net)** or contact ChatHealth (11-19yrs) by Text: **0750 733 0510**. You can also visit us for help, support and advice via **w:** [lancsyoungepeoplefamilyservice.co.uk](http://lancsyoungepeoplefamilyservice.co.uk)

